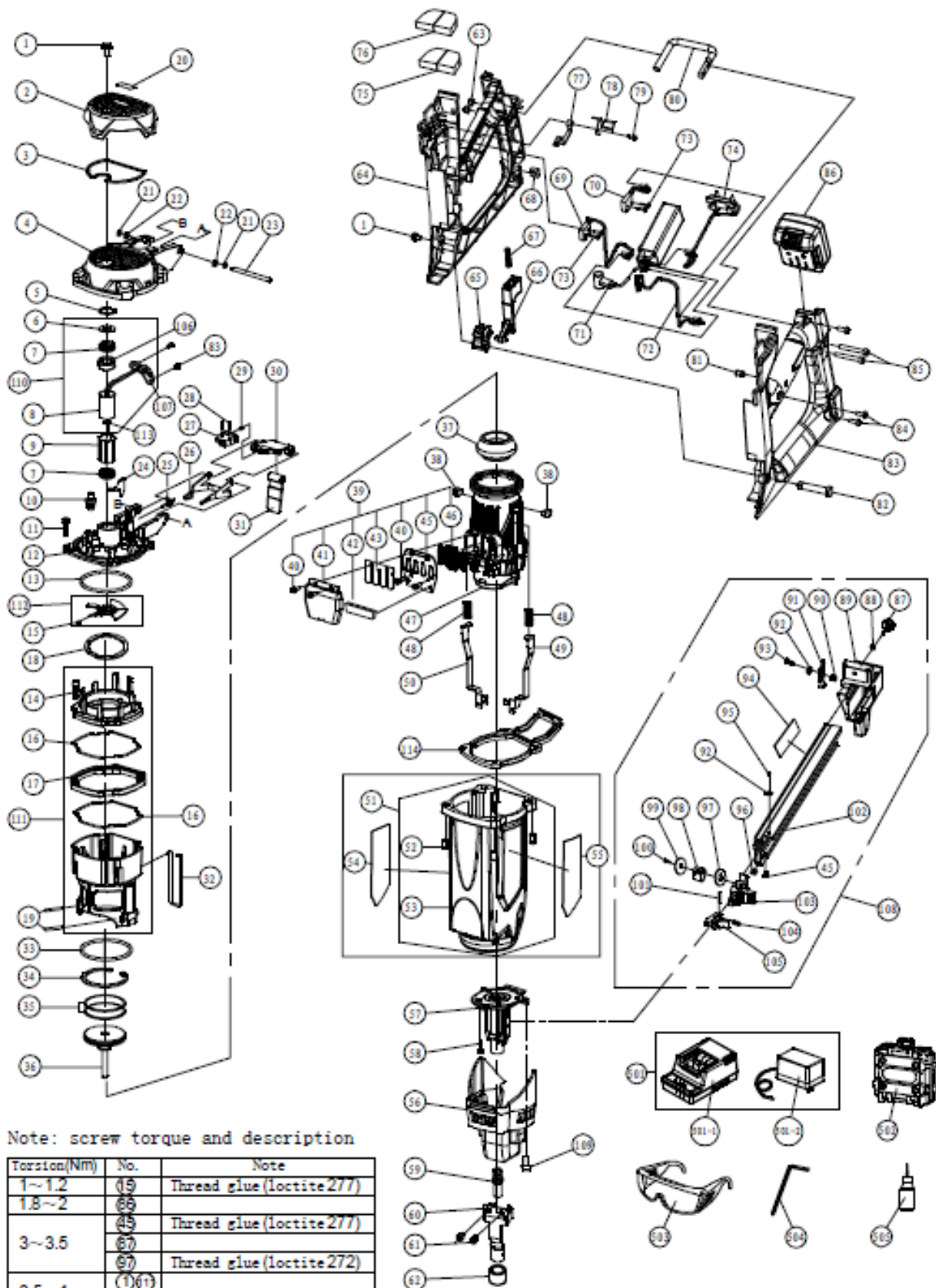


RÄJÄYTYSKUVA JA OSALISTA KAASUKÄYTTÖINEN BETONINAULAIN

MALLI: GSN 40B



Note: screw torque and description

| Torsion(Nm) | No. | Note |
|-------------|--------|---------------------------|
| 1~1.2 | (15) | Thread glue (loctite 277) |
| 1.8~2 | (65) | Thread glue (loctite 277) |
| 3~3.5 | (45) | Thread glue (loctite 277) |
| | (67) | Thread glue (loctite 272) |
| 3.5~4 | (1)(1) | |
| | (43) | Thread glue (loctite 277) |
| 5.5~8 | (1) | |
| | (59) | Thread glue (loctite 272) |

OSALISTA

GSN 40B

Note : ☆ consumable parts

| No. | Parts Name | Qty | Remark |
|-----|---------------------------|-----|--------|
| 1 | Hex Bolt M5x10 | 2 | |
| 2 | Top Cover | 1 | |
| 3 | Filter | 1 | |
| 4 | Filter Cover | 1 | |
| 5 | Retaining Ring d0=24 | 1 | |
| 6 | Gasket | 1 | |
| 7 | Rubber Gasket | 2 | |
| 8 | Motor Assembly | 1 | |
| 9 | Mount Sleeve | 1 | |
| 10 | Spark Plug | 1 | |
| 11 | Hex.Socket HD M5x25 | 4 | |
| 12 | Cylinder Head | 1 | |
| 13 | O-Ring 59.92x3.53 | 1 | ☆ |
| 14 | Hex.Socket HD M4x20 | 4 | |
| 15 | Holding Screw M4x5 | 1 | |
| 16 | Abnormity O-Ring | 2 | |
| 17 | Chamber Intermediate pad | 1 | |
| 18 | Rubber Mat | 1 | |
| 19 | Parallel pin | 1 | |
| 20 | Top Name Plate | 1 | |
| 21 | O- Retaining Ring 3.5x2 | 2 | |
| 22 | Washer d=5 | 2 | |
| 23 | Shaft | 1 | |
| 24 | High Pressure Wire Platen | 1 | |
| 25 | Adapter | 1 | ☆ |
| 26 | Cell Lever | 1 | |
| 27 | Latch | 1 | |
| 28 | Spring Straining Pin 2x8 | 2 | |
| 29 | Latch Spring | 1 | |
| 30 | Cell Cover | 1 | |
| 31 | Cell Rubber | 1 | |
| 32 | Lock Bar | 1 | |
| 33 | O-Ring 66.27x3.53 | 1 | ☆ |
| 34 | Retaining Ring d0=58 | 1 | |
| 35 | Piston Ring | 2 | ☆ |
| 36 | Piston Assembly | 1 | |
| 37 | Piston Bumper | 1 | |
| 38 | Chamber Stop Rubber | 2 | |
| 39 | Valve Assembly | 1 | |
| 40 | Hex.Socket HD M4x10 | 4 | |
| 41 | Buffer Cover | 1 | |
| 42 | Muffler | 1 | |
| 43 | Lead Valve | 1 | |
| 44 | Read Plate | 1 | |
| 45 | Bolt M4x6 | 3 | |
| 46 | Exhaust Baffle | 1 | |
| 47 | Cylinder | 1 | |
| 48 | Pushing Arm Spring | 1 | |
| 49 | Left Pushing Arm | 1 | |
| 50 | Right Pushing Arm | 1 | |
| 51 | Housing Assembly | 1 | |
| 52 | Nut M5 | 4 | |
| 53 | Housing | 1 | |
| 54 | Name Plate | 1 | |
| 55 | Specification Plate | 1 | |
| 56 | Protect Cover | 1 | |
| 57 | Nail Seat | 1 | |
| 58 | Hex.Socket HD M5x15 | 4 | |
| 59 | Nailer Mouth | 1 | |
| 60 | Pushing arm | 1 | |
| 61 | Hex Bolt | 2 | |
| 62 | Pushing arm jacket | 1 | |

| No. | Parts Name | Qty | Remark |
|-------|-------------------------------|-----|-----------|
| 63 | Locknut | 1 | |
| 64 | Right Handle | 1 | |
| 65 | Lock block | 1 | |
| 66 | Trigger | 1 | |
| 67 | Trigger spring | 1 | |
| 68 | Square nut M6 | 1 | |
| 69 | Electric fan switch assembly | 1 | |
| 70 | High Voltage switch assembly | 1 | |
| 71 | Electric controller assembly | 1 | |
| 72 | Motor Line assembly | 1 | |
| 73 | Screw ST2.2x11 | 4 | |
| 74 | Power Line assembly | 1 | |
| 75 | Fuel cell sponge | 1 | |
| 76 | Tank block | 1 | |
| 77 | Switch spring | 1 | |
| 78 | Wiring cover | 1 | |
| 79 | Screw ST2.9x8 | 1 | |
| 80 | Hook | 1 | |
| 81 | LED Light | 1 | |
| 82 | Rotating shaft | 1 | |
| 83 | Left Handle | 1 | |
| 84 | Countersunk Screw ST4.2x20 | 3 | |
| 85 | Hex. Socket HD. Bolt M5x35 | 2 | |
| 86 | Li-Ion Battery Pack | 2 | |
| 87 | Lock Bolt | 1 | |
| 88 | Washer d=6 | 1 | |
| 89 | Short Fixed Block | 1 | GSN40B-30 |
| | Long Fixed Block | 1 | GSN40B-40 |
| 90 | Catch Spring | 1 | |
| 91 | Catch | 1 | |
| 92 | Washer d=4 | 1 | |
| 93 | Screw ST4.2x8 | 1 | |
| 94 | Warning Lable | 1 | |
| 95 | Bolt M4x4 | 1 | |
| 96 | Square Nut M4 | 1 | |
| 97 | Ribbon Spring Gasket Down | 1 | |
| 98 | Ribbon Spring | 1 | ☆ |
| 99 | Ribbon Spring Gasket | 1 | |
| 100 | Fixed Stuff | 1 | ☆ |
| 101 | Parallel Pins 3x20 | 1 | |
| 102 | Short Nail Magazine | 1 | GSN40B-30 |
| | Long Nail Magazine | 1 | GSN40B-40 |
| 103 | Nail Feeder Seat | 1 | |
| 104 | Nail Feeder Spring | 1 | |
| 105 | Nail Feeder | 1 | |
| 106 | Washer | 1 | |
| 107 | Motor PCB Board Assembly | 1 | |
| 108 | Short Magazine Assembly | 1 | GSN40B-30 |
| | Long Magazine Assembly | 1 | GSN40B-40 |
| 109 | Hex Bolt M5x6 | 1 | |
| 110 | Motor Components | 1 | |
| 111 | Combustion chamber components | 1 | |
| 112 | Wind leaf component | 1 | |
| 113 | Dust shield | 1 | |
| 114 | Casing intermediate pad | 1 | |
| 501 | Charger | 1 | |
| 501-1 | Charger Base | 1 | |
| 501-2 | Adapter | 1 | |
| 502 | Case Assembly | 1 | |
| 503 | Safety Glasses | 1 | |
| 504 | Hex.Bar Wrench M5 | 2 | |
| 505 | Oiler | 1 | |